

# SMART TRAVEL



## Urban Luxe

Understated style sets Atholl Place apart from the rest of the boutique hotel bunch, says Mila Crewe-Brown

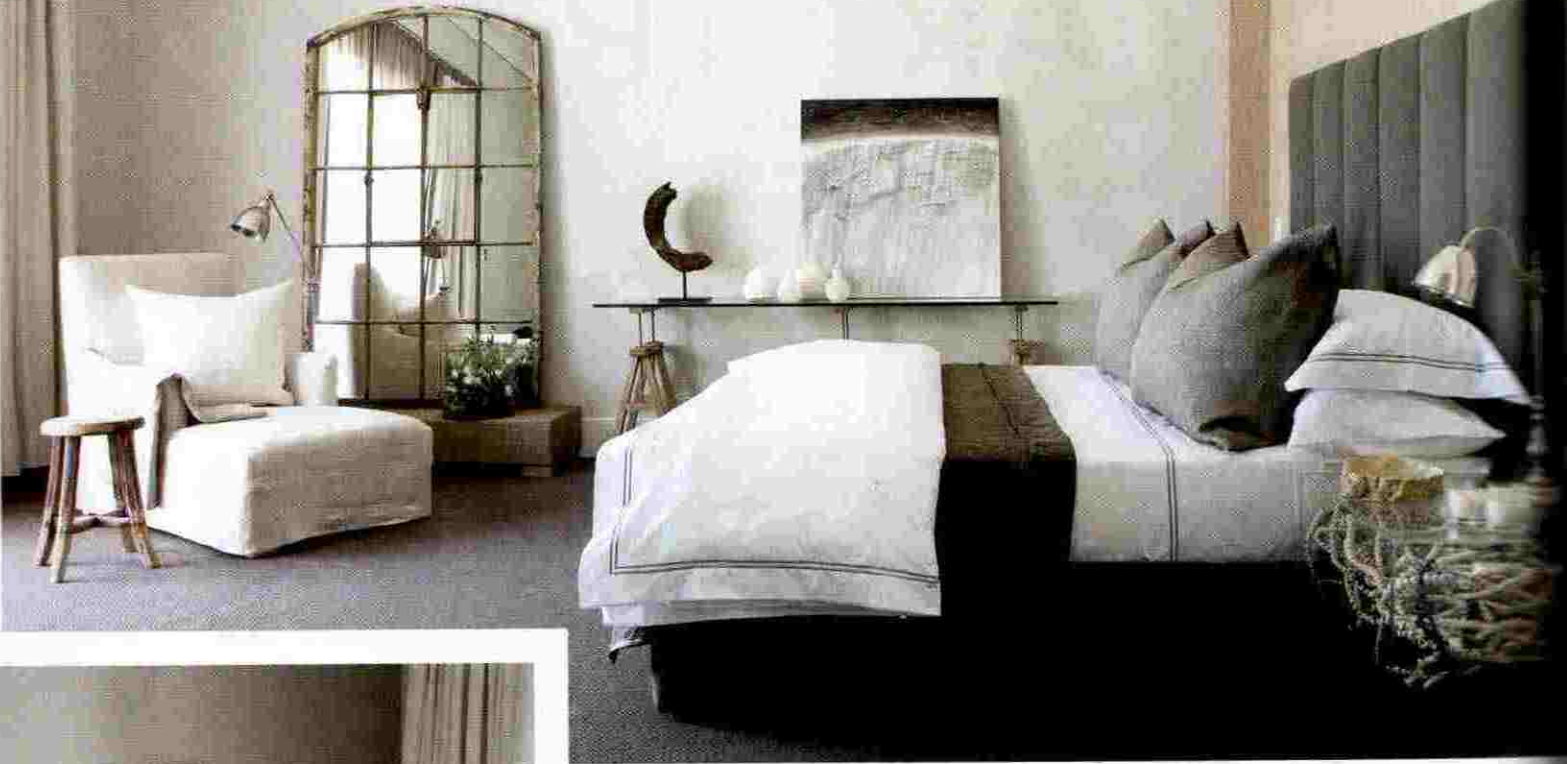
SUMARI KRIGE never does anything in half measures and her new venture, Atholl Place, is no exception. This luxurious new boutique hotel, with all the bells and whistles one can think of, adds world-class appeal to the leafy Johannesburg suburb in which it is situated.

Filling a gap in the market, the focus falls on providing a personal experience with the utmost attention to detail in a smaller and more intimate setting than most boutique hotels.

Together with interior designer Adele van der Merwe, Krige set out to create a hotel that offered guests the best ▶

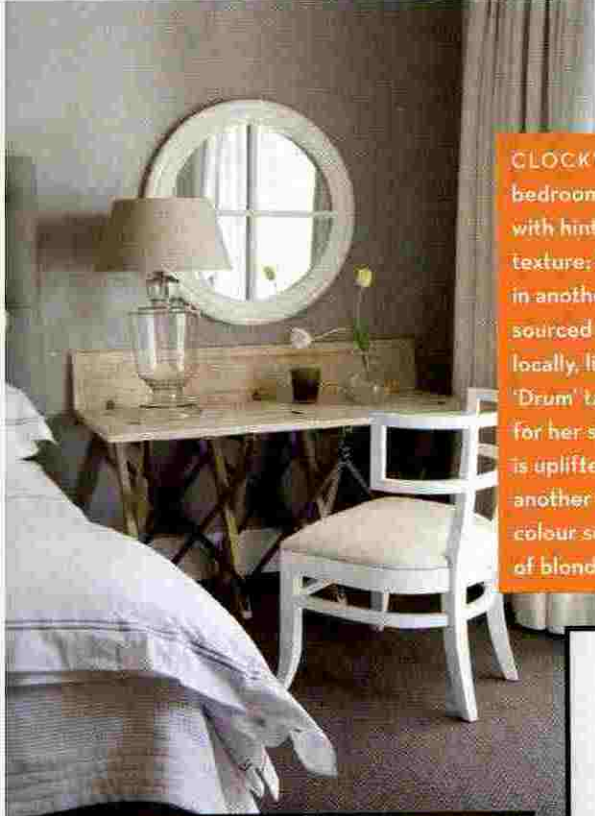
A monochrome mix of classic stripes and borders lends contemporary masculine appeal to this bedroom

DESTINATION



CLOCKWISE FROM TOP Each bedroom is stylishly uncomplicated with hints of African objects providing texture; the living and work area in another room; the furniture was sourced both internationally and locally, like these African-inspired 'Drum' tables; on Krige's buying trips for her store; a relaxing lounge area is uplifted with accents of green; in another bedroom, the grey-and-white colour scheme is enlivened by touches of blonde on a lampshade and table

in quality, style and luxury without compromising on home comforts. And with just ten bedrooms, none smaller than 50 square metres, attention to detail is at the top of the list. The individually decorated rooms all have en-suite bathrooms and come complete with added luxuries ranging from Frette bed linen and double-layered curtains to Wi-Fi docking stations and underfloor heating. The hotel also ▶



# DESTINATION



**CLOCKWISE FROM TOP LEFT**  
 Neutral colours offer a sophisticated elegance to this boutique hotel; Krige used 'off' shades and 'dirty' colours to lend energy to the smoky palette; effortless style is created in the dining area through the use of top-quality linen and crockery; the visual impact of this space is upped by groupings of Chinese lanterns and hand-made vessels; a map showing Atholl Place serves as a work of art

has its own swimming pool, a small gym and sauna and an in-house chef for when you're staying in.

The look at Atholl Place is one of understated elegance and contemporary classic design with cool whites and greys keeping the interior neutral yet timeless.

■ *Bed and Breakfast from R2 500 to R3 500 per room per night including airport transfers. Call ☎ 011 783 3410*

